

## Artwork specifications EBC EP

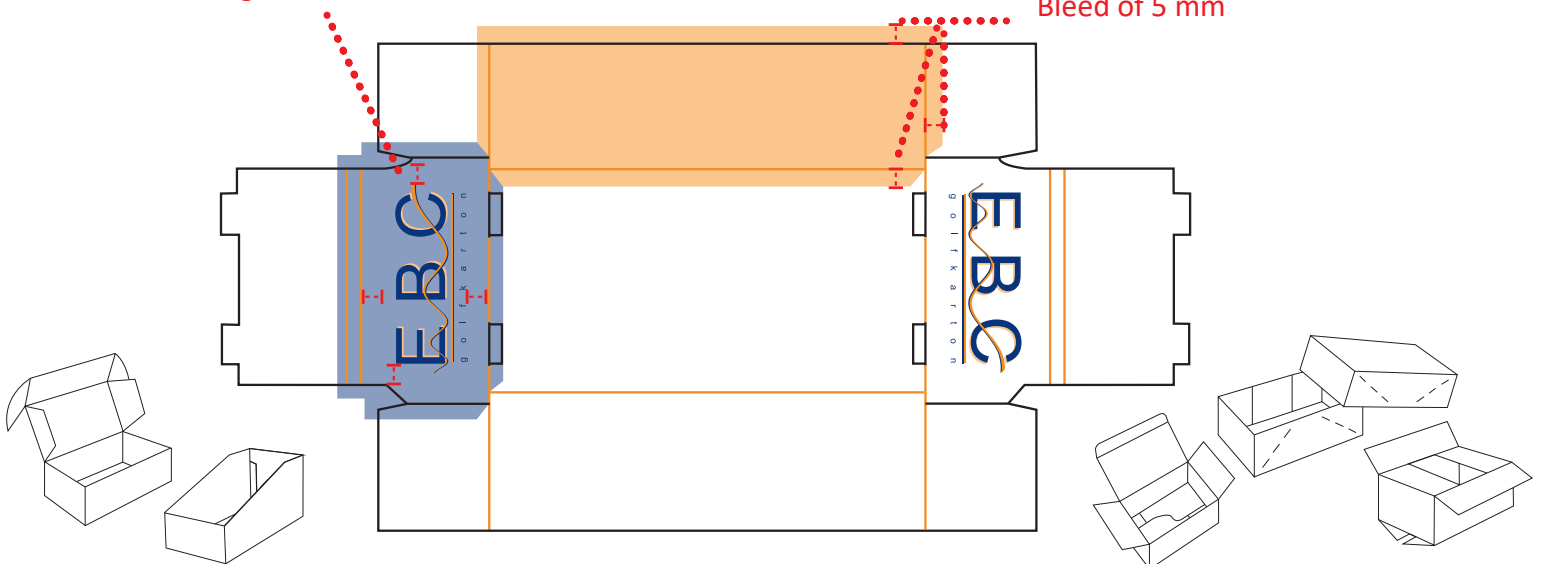
- We prefer files created in **Adobe Illustrator CC**.
- Supply your artwork as an **unscaled high resolution PDF-file**. Please send us;
  - Artwork with the **die-lines visible**. (To see the positioning of the artwork)
  - Artwork **without the die-lines**. (To use for production)
- Color settings;
  - Offset: Max. 6 colors**  
for example: CMYK + Max. 2 **PMS Coated** colors *or* 6 PMS Coated colors
  - Flexoprint: Max. 4 PMS Uncoated** colors (Don't use CMYK)
  - Flexo High: Max. 6 PMS Coated colors** (Don't use CMYK)

In general, do not use RGB or RAL-colors. These colors are not used for printing.

- Convert all texts to **outlines**.
- Images need to be at least **300 dpi**.
- Bleed on the outside of cutting- and crease lines need to be at least **5 mm**. This prevents unprinted parts to become visible due to production tolerance.
- Take account of a safety margin of 5 mm for cutting and crease lines.  
Do not place any important text / artwork within this area.

Text or logo minimal 5 mm  
from the edges

Bleed of 5 mm



## Artwork specifications EBC EP

---

### Tips:

- In Adobe Illustrator; do not lock any part within a layer.
- Font size minimal 6pt (2mm). Font size minimal 8 pt (3mm) when used in diapositive.
- Lines at least 0.25 pt (0.1mm). Lines at least 0.5 pt (0.2 mm) when used in diapositive.
- Provided artwork should show the outside graphics of the box.  
If this is not the case, make sure you mark this clearly in your artwork.

